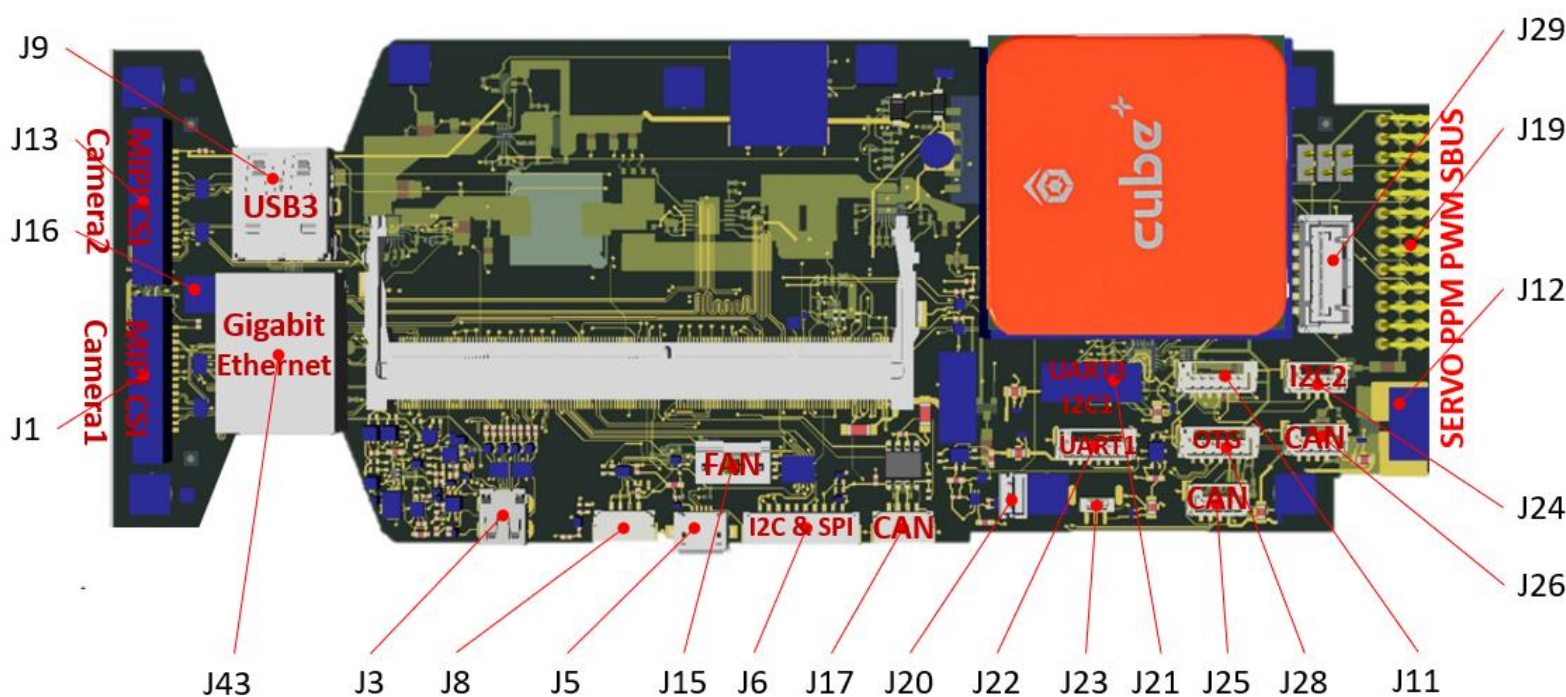


ZCarrier

- The **ZCarrier** baseboard combines a Pixhawk Cube flight controller (FC) module with the NVIDIA Jetson Xavier NX companion computer
- Specifically designed for high performance and low-power envelope AI computing
- Meet to multi-vision demands in drones, UAV, vehicles, robots, industrial inspection and deep learning
- Has a compact form factor with all the connectivity you need for development
- It follows the Pixhawk Connector and Autopilot Bus Standard, that allows easy FC Module swap
- The FC Module is internally connected to NVIDIA Jetson Xavier NX via TELEM2, so it allows for ethernet connectivity of the FC.



Connectivity

J6 – SPI, I2C

J17, J25, J26 – CAN Bus

J20 – RC Control (SPEKTUM/DSM)

J21 – UART 3, I2C, IO LED, Safety Button

J22 – UART 1

J23 – AUX ADC

J24 – I2C

J28 – OTG, Buzzer, FMU LED

J29 – Power sensor (Current, Voltage)

J19 – 12 PWM outputs, RC Control (PPM, SBUS)

J11 – UART4, I2C

J1, J13 – CSI Cameras

J9 – USB3

J43 – 1Gb Ethernet

J16 – POE

J3 – Micro HDMI

J8 – Debug

J5 – Micro USB

J15 – Fan

J12 – Power 2S-4S